

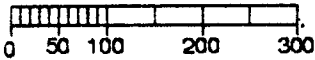
2534

MAP OF SURVEY FOR THE NORTHWEST 1/4 OF THE NORTHEAST 1/4 OF SECTION 27, TOWNSHIP 45 NORTH, RANGE 6 WEST OF THE FOURTH PRINCIPLE MERIDIAN, TOWN ON GRANDVIEW, BAYFIELD COUNTY, WISCONSIN FOR TERESA AND DENNIS GUNDERSON

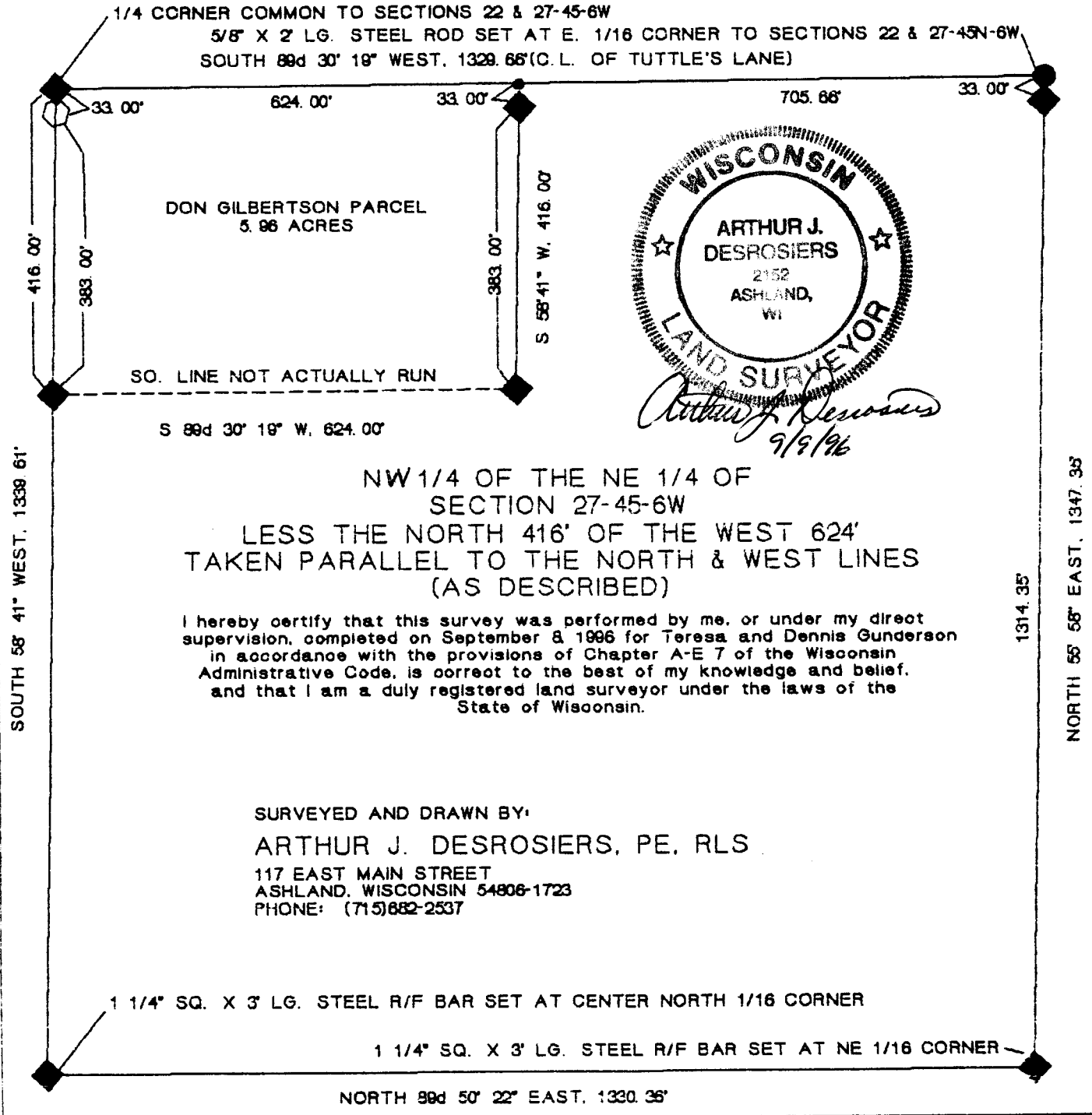
MAP LEGEND & KEY TO SYMBOLS

- BAYFIELD COUNTY ALUMINUM MONUMENT & CAP PLACED AS WITNESS TO 1/4 CORNER
- ◆ 1 1/4" SQ. X 3' LG. STEEL R/F BAR PLACED
- RAILROAD SPIKE PLACED ON LINE (C. L. OF ROAD)

SCALE: 1 INCH = 200 FEET

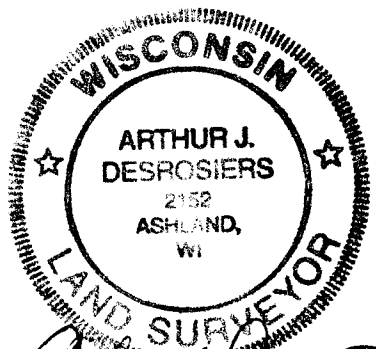


NORTH



1/4 CORNER COMMON TO SECTIONS 22 & 27-45-6W
 5/8" X 2' LG. STEEL ROD SET AT E. 1/16 CORNER TO SECTIONS 22 & 27-45N-6W
 SOUTH 89d 30' 19" WEST, 1329.66' (C.L. OF TUTTLE'S LANE)

DON GILBERTSON PARCEL
 5.96 ACRES



Arthur J. Desrosiers
 9/9/96

NW 1/4 OF THE NE 1/4 OF SECTION 27-45-6W
 LESS THE NORTH 416' OF THE WEST 624'
 TAKEN PARALLEL TO THE NORTH & WEST LINES
 (AS DESCRIBED)

I hereby certify that this survey was performed by me, or under my direct supervision, completed on September 8, 1996 for Teresa and Dennis Gunderson in accordance with the provisions of Chapter A-E 7 of the Wisconsin Administrative Code, is correct to the best of my knowledge and belief, and that I am a duly registered land surveyor under the laws of the State of Wisconsin.

SURVEYED AND DRAWN BY:
 ARTHUR J. DESROSIERS, PE, RLS
 117 EAST MAIN STREET
 ASHLAND, WISCONSIN 54806-1723
 PHONE: (715)682-2537

1 1/4" SQ. X 3' LG. STEEL R/F BAR SET AT CENTER NORTH 1/16 CORNER
 1 1/4" SQ. X 3' LG. STEEL R/F BAR SET AT NE 1/16 CORNER

NORTH 89d 50' 22" EAST, 1330.35'

SOUTH 58° 41' WEST, 1338.61'

1314.35'

NORTH 55° 58' EAST, 1347.35'

NW-NE

27-45-6